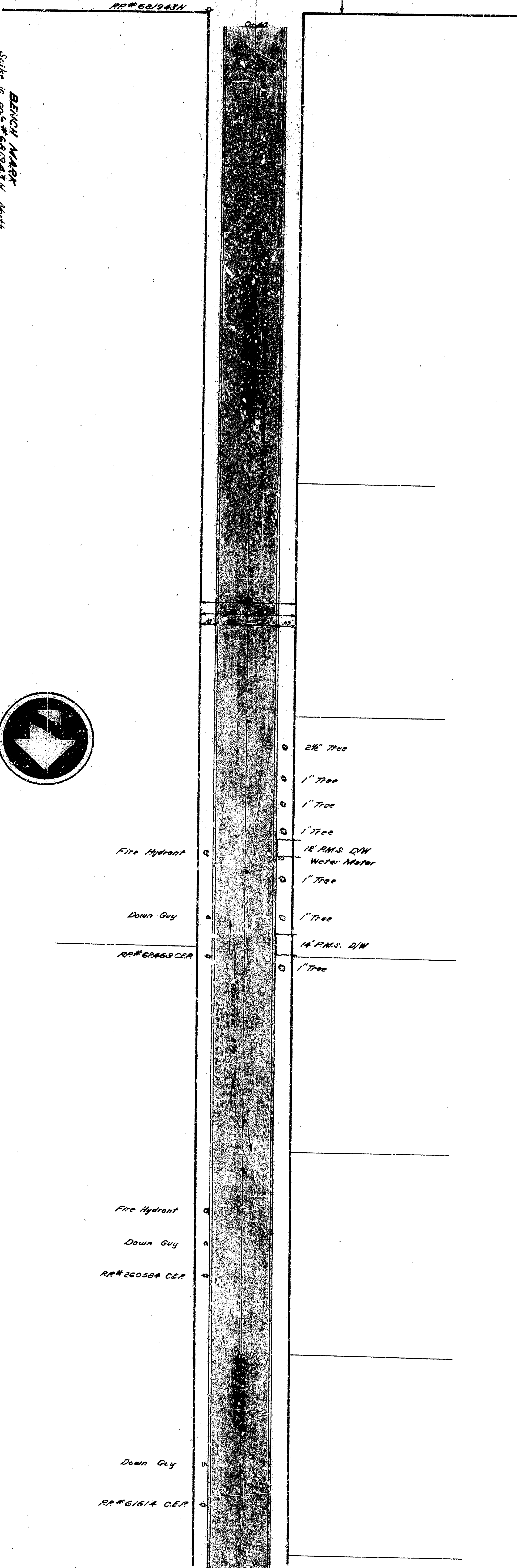
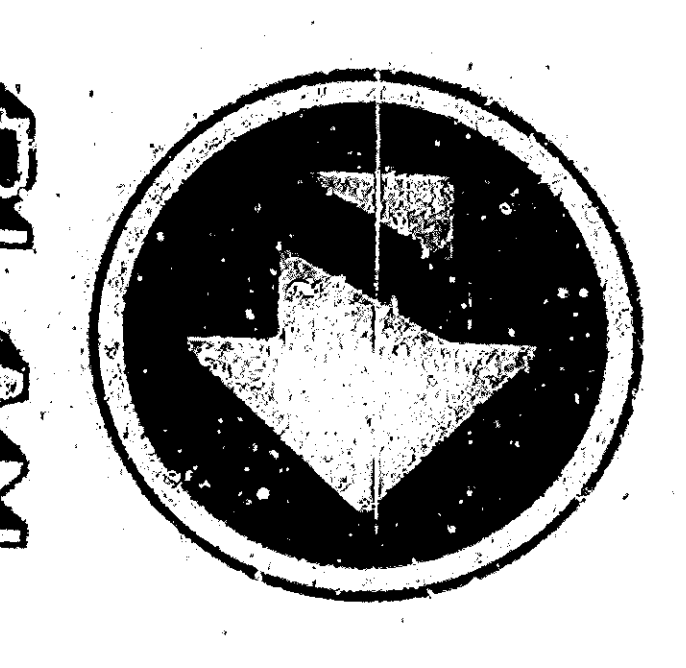


**PROFILE**  
Scale: 1" = 4'

RANDALL AVENUE  
San Bernardino City Limits Line



BENCH MARK  
Spoke in post #63943H North  
East corner of Randall Avenue  
& East 9th Street. Elev. 1157.51 N.T.S.



Scale: 1" = 40'

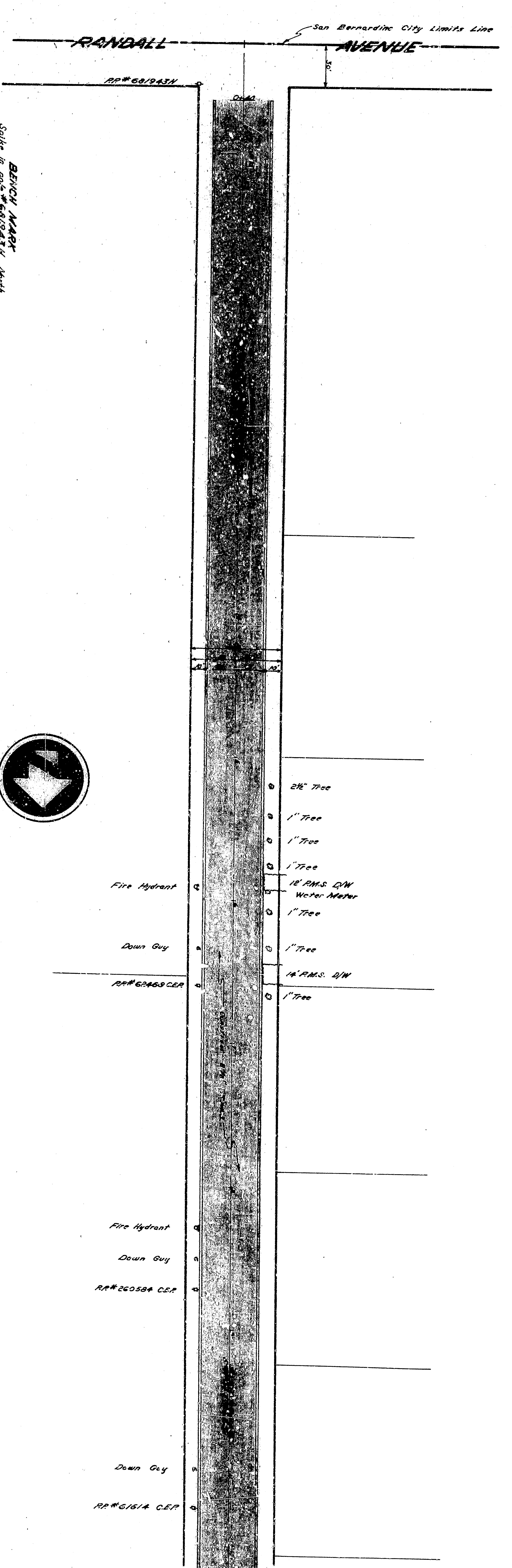
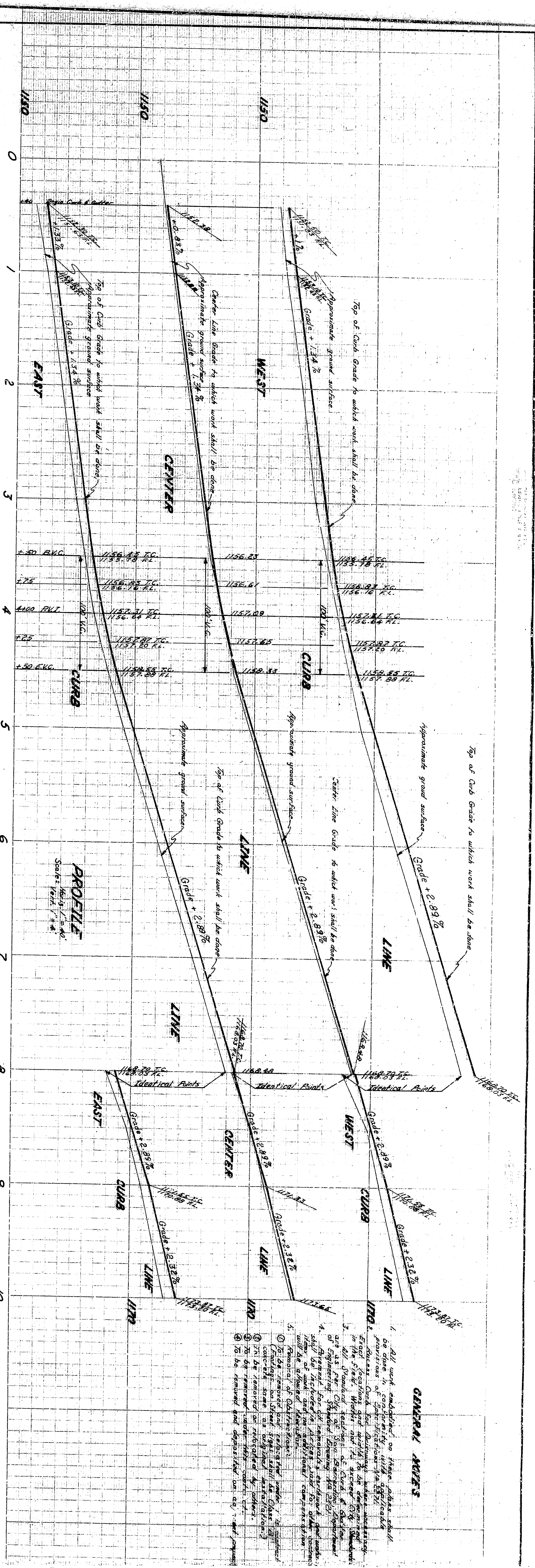
**GENERAL NOTES**

- All work indicated on these plans shall be done in conformity with applicable provisions of Specifications for Highway Construction, 1957 Edition, published by the State of California, Department of Transportation, and the Standard Specifications for Road and Street Construction, 1957 Edition, published by the State of California, Department of Transportation.
- Grades shown on these plans are based on the elevations of the existing ground surface as shown on the profile view.
- Grades shown on these plans are based on the elevations of the existing ground surface as shown on the profile view.
- Grades shown on these plans are based on the elevations of the existing ground surface as shown on the profile view.
- Grades shown on these plans are based on the elevations of the existing ground surface as shown on the profile view.

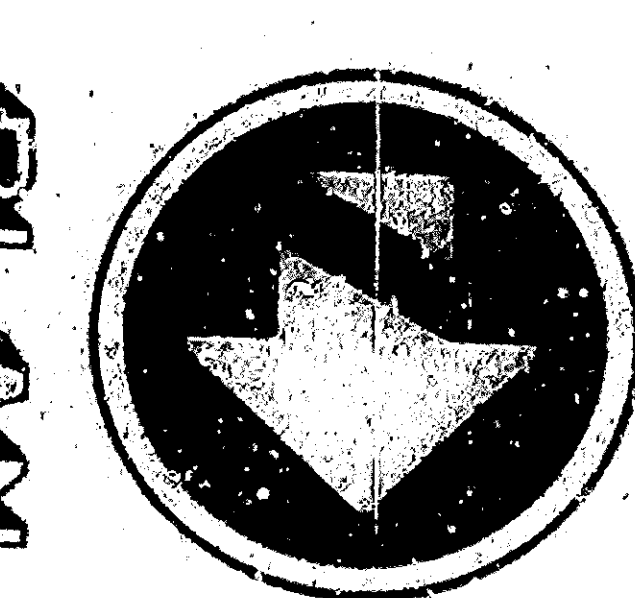
**NOT CONSTRUCTED**

APPROVED	DATE	BY
DESIGNED	DATE	BY
CHECKED	DATE	BY
DRAWN	DATE	BY
CHECKED	DATE	BY
DRAWN	DATE	BY
CHECKED	DATE	BY
DRAWN	DATE	BY

DEPARTMENT OF ENGINEERING  
CITY OF SAN BERNARDINO  
CURBS, GUTTERS & DRIVEWAYS  
RANDALL AVENUE TO MAIN STREET



BENCH MARK  
 Spike in post #63943H North  
 East corner of Randall Avenue  
 & East of 9th Street - E.L. 1157.14 S.L.



PLAN  
 Scale: 1"=40'

**GENERAL NOTES**

- All work indicated on these plans shall be done in conformity with applicable provisions of Specifications for Highway Construction, 1977 Edition, published by the American Association of Highway Engineers, Inc., and the Standard Specifications for Highway Construction, published by the American Road & Builders Builders' Exchange, Inc., and the Standard Specifications for Highway Construction, published by the American Road & Builders Builders' Exchange, Inc.
- The proposed work shall be done in accordance with the plans and specifications and shall be subject to the approval of the City Engineer.
- The contractor shall be responsible for obtaining all necessary permits and for the safety of the public during the construction.
- The contractor shall be responsible for the protection of all existing utilities and structures.
- The contractor shall be responsible for the removal and disposal of all excess material.

NOT CONSTRUCTED

APPROVED	DATE	BY
<i>(Signature)</i>	12-13-77	1041
CITY ENGINEER		
CITY OF SAN BERNARDINO		
CURB, GUTTER & DRIVEWAY		
EUCALYPTUS AVENUE		
RANDALL AVENUE TO MAIN STREET		
SHEET 1 OF 5		
CHECKED BY	DATE	
<i>(Signature)</i>	12-13-77	
DESIGNED BY	DATE	
<i>(Signature)</i>	12-13-77	